

Burns White Women's Initiative

Burns White is committed to the overall well-being of our employees, and our Women's Initiative helps create this culture by emphasizing professional development, individualism, and open communication in our workforce.

**Lauren S. Angeles**

856.382.6010
lsangeles@burnswhite.com
Healthcare | Professional Liability

**Courtney C. Barbacane**

484.567.5782
ccbarbacane@burnswhite.com
Professional Liability

**Kimberly M. Baron**

484.567.5713
kmbaron@burnswhite.com
Healthcare

**Nicole E. Bazy**

412.995.3087
nebazy@burnswhite.com
Employment | Railroad

**Christine C. Blair**

484.567.5758
ccblair@burnswhite.com
Healthcare

**Rachael C. Bowe**

412.995.3034
rcbowe@burnswhite.com
Family Law

**Courtney C. Brennan**

412.995.3151
ccbrennan@burnswhite.com
Employment | Litigation

**Briana M. Cavallaro**

215.587.1605
bmcavallaro@burnswhite.com
Healthcare

**McCall B. Chafin**

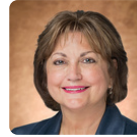
412.995.3261
mbchafin@burnswhite.com
Litigation

**Samantha L. Conway**

215.587.1653
slconway@burnswhite.com
Healthcare | Professional Liability

**Claire M. Cookinham**

412.995.3284
cmcookinham@burnswhite.com
Litigation | Transportation

**Ellen Nunno Corbo**

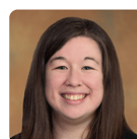
212.661.1700
encorbo@burnswhite.com
Business | Litigation

**Carol M. Cowhey**

215.587.1674
cmcowhey@burnswhite.com
Healthcare | Professional Liability

**Amelia E. Curotto**

484.567.5779
aecurotto@burnswhite.com
Healthcare | Professional Liability

**Kathleen P. Dapper**

484.567.5787
kpdapper@burnswhite.com
Insurance Coverage | Transportation

**Allison M. Erndl**

412.995.3288
amerndl@burnswhite.com
Healthcare

**Monica C. Fillmore**

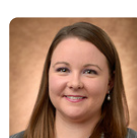
856.382.6018
mcfillmore@burnswhite.com
Healthcare | Professional Liability

**Anne S. Frankel**

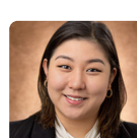
484.567.5754
asfrankel@burnswhite.com
Healthcare | Professional Liability

**Maria R. Granaudo Gesty**

302.295.2260
mrgranaudo@burnswhite.com
Healthcare | Professional Liability

**Ashley L. Griffin**

412.995.3150
algriffin@burnswhite.com
Healthcare | Professional Liability

**Na Lee Ha**

484.567.5664
nha@burnswhite.com
Healthcare

**Brooke L. Hamilton**

216.760.1832
blhamilton@burnswhite.com
Railroad | Toxic Tort

Burns White Women's Initiative

Burns White is committed to the overall well-being of our employees, and our Women's Initiative helps create this culture by emphasizing professional development, individualism, and open communication in our workforce.

**Emily K. Harlovic**

412.995.3074

ekharlovic@burnswhite.com

Litigation | Transportation

**Kyleen A. Hinkle**

813.393.8562

kahinkle@burnswhite.com

Healthcare | Professional Liability

**Michelle D. Kaminski**

570.338.6114

mdkaminski@burnswhite.com

Healthcare

**Megan B. Kelleher**

484.567.5761

mbkelleher@burnswhite.com

Healthcare | Professional Liability

**Aleksandra J. Kocelko**

412.995.3159

ajkocelko@burnswhite.com

Family Law | Estate Planning

**Jill E. Lansden**

412.995.3000

jelansden@burnswhite.com

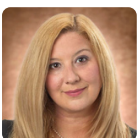
Litigation

**Erika L. Lower**

856.406.3908

ellower@burnswhite.com

Healthcare

**Denise P. Lubliner**

813.359.6220

dplubliner@burnswhite.com

Healthcare

**Megan C. Mason**

856.406.3906

mcmason@burnswhite.com

Healthcare | Professional Liability

**Meghan M. Matscherz**

412.995.3046

mmmatscherz@burnswhite.com

Litigation | Professional Liability

**Colleen A. Mountcastle**

216.760.1827

camountcastle@burnswhite.com

Appellate | Railroad

**Darla A. Mushet**

304.231.1007

damushet@burnswhite.com

Healthcare

**Katherine J. Noa**

484.567.5749

kjnoa@burnswhite.com

Healthcare | Professional Liability

**Holly M. Olarczuk-Smith**

216.760.1828

hmolarczuk-smith@burnswhite.com

Appellate | Railroad

**Dorothy C. O'Neil**

412.995.3107

dconeil@burnswhite.com

Family Law

**Paula Lozano Parisi**

813.359.6221

plparisi@burnswhite.com

Healthcare | Professional Liability

**Danielle M. Parks**

412.995.3203

dmparks@burnswhite.com

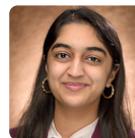
Workers' Compensation

**Lisa D. Perrache**

412.995.3219

ldperrache@burnswhite.com

Railroad | Real Estate

**Kaavya Ramesh**

412.995.3050

kramesh@burnswhite.com

Litigation

**Mary-Jo Rebelo**

412.995.3347

mjrebelo@burnswhite.com

Employment | Commercial Litigation

**Amy R. Riley**

570.338.6110

arriley@burnswhite.com

Healthcare | Professional Liability

**Amanda H. Sargent**

412.995.3089

ahsargent@burnswhite.com

Regulatory | Railroad

**Weldianne C. Scales**

412.995.3290

wcscales@burnswhite.com

Railroad

**Katherine E. Senior**

484.567.5781

kesenior@burnswhite.com

Healthcare | Professional Liability

**Alana M. Staniszewski**

412.995.3094

amstaniszewski@burnswhite.com

Workers' Compensation

**Elizabeth A. Stefanski**

484.567.5757

eastefanski@burnswhite.com

Healthcare | Professional Liability

**Marcy B. Tanker**

484.567.5759

mbtanker@burnswhite.com

Healthcare | Professional Liability

**Christina G. Tershakovec**

215.587.1626

cgtershakovec@burnswhite.com

Healthcare | Products Liability

**Rebecca M. Waddell**

215.587.1645

rmwaddell@burnswhite.com

Healthcare | Products Liability

**Samantha D. Weigand**

484.567.5726

sdweigand@burnswhite.com

Workers' Compensation